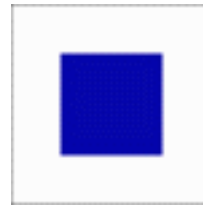


Fairway and flashing lights.



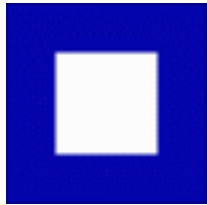
Shorten Course



Individual Recall
one blast of horn.



General Recall
two blasts of horn.



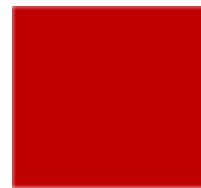
Preparatory Flag



Postponement



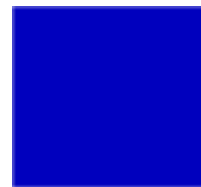
Black Flag



Red Yawl



Abandonment



Blue Yawl



Life jackets



Yawl Club Racing

Preparatory Flag

Normal preparatory signal; no starting penalties are in effect. Boats that are over the line at the start can return through the line or round the ends.

The Black Flag

Rule 30.3 will be in effect. If boat is in the triangle formed by the ends of the line and the first mark during the minute before its start it will be disqualified.

Remember that it is the flag signals that control the start. The horn/klaxon are a luxury.

Shortened course

When displayed at a rounding mark the finish is between the nearby mark and the mast displaying the S flag.

When displayed at a line that boats are required to cross at the end of each lap the finish is that line.